

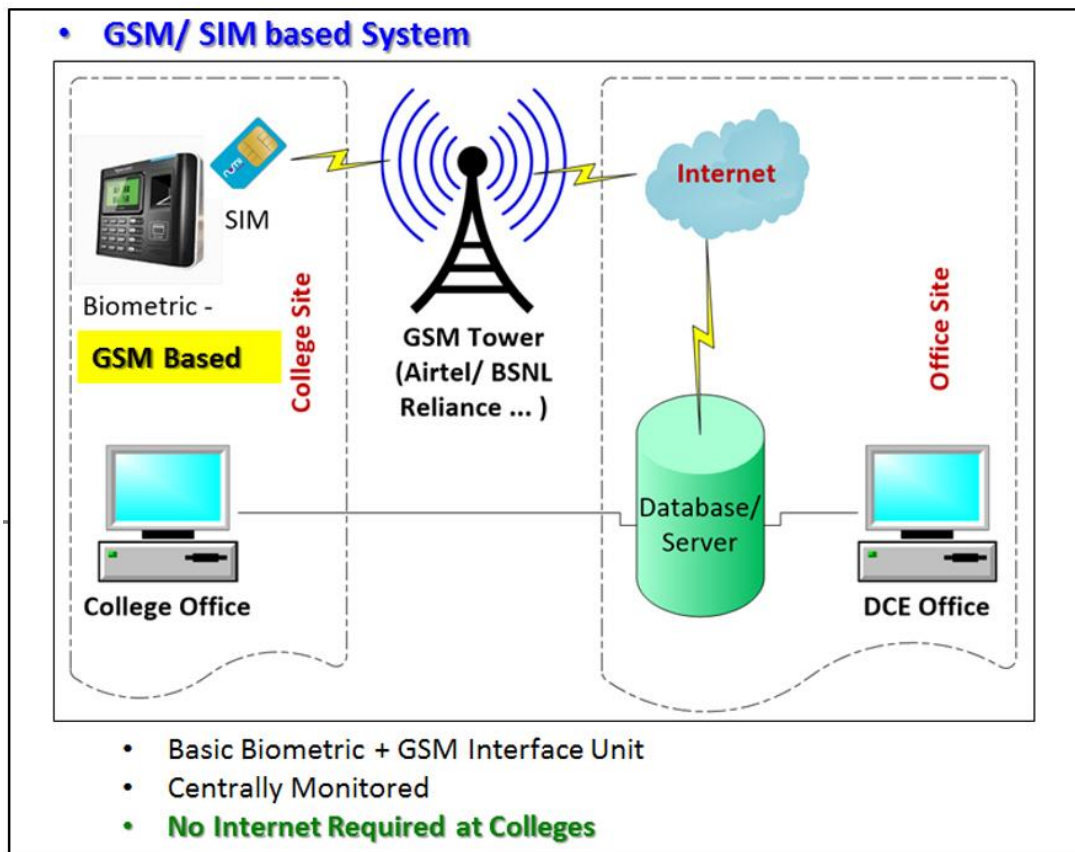
## Biometric Face and Finger Print Attendance Monitoring Unit

- The supplied device, **eSSL – iFace 302**, is a Multi Biometric Face Identification Time Attendance & Access Control System, with **on-board GSM SIM card**, configured for remote capturing of Time-Attendance using GSM based Push Technology.

Specification	
Dimension (LxWxD)	193.6 x 146.8 x 111mm
CPU	Muti-Bio CPU-800 MHz
Memory	256 MB Flash, 64MB SD RAM
Camera	High Resolution Infrared Camera
Face Capacity	Upto 500 (1:N), 3000 (1:1)
Fingerprint Capacity	2,000
Transaction Capacity	1,00,000 Logs
Communication	TCP/IP, RS485, USB-host
Power Supply	12V DC, 1.5A
Identification Speed	<=2sec
Operating Temperature	0°C - 45°C
Operating Humidity	20%-80%
Access Control	Supports EM Lock, Exit Button
Display	4.3" TFT Touch Screen
Sensor	500DPI Optical Sensor

- The Device is supplied with 5 years Comprehensive Onsite Warranty.**
- The device has an in-built battery and requires charging, like mobile handsets.
- The device is Multi Biometric capable and can record both Face and Finger Print for identification of staff.
- Both Face and Finger prints of staff members shall be recorded.**
- For punching attendance, either Face recognition or Finger Print Identification can be used. **BOTH Face recognition and Finger Print Identification are not required.**
- Punching attendance two times a day, one for ENTRY and another for EXIT, is mandatory.**
- All punching attempts are captured by the device and are recorded in the central server. However, **The FIRST and the LAST punch of the day are considered as ENTRY and EXIT.**

- Immediately after punching of attendance by the staff, the attendance information gets recorded in the server at DCE Head office through GSM mobile signal.



- The device shall be kept charged always during College working days.
- The Device shall always be housed inside the metal box supplied and be kept under lock and key.
- Principal shall take necessary steps to keep the Biometric device functional and available for capturing attendance. Principal shall be responsible for any physical tampering or device theft.

## Parts of Biometric Device and its Maintenance



Metal Box with Lock and Key

Biometric Device

Battery Charger



Plugging-in of Charger pin from the bottom of the device

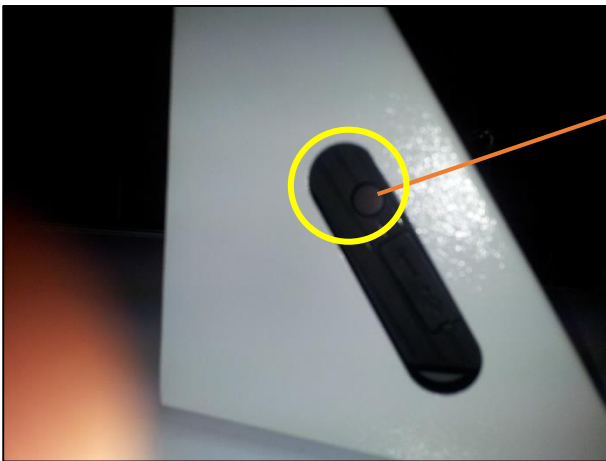


Biometric Device Securely placed inside metal box.

Glass Window with openings for user finger and device camera



Lock and key for Metal Box



Power Button for Biometric Device, at the right hand side of the device, through the side window in the metal box.

**(Gently press power button and allow the device for 20 seconds to switch and Boot)**



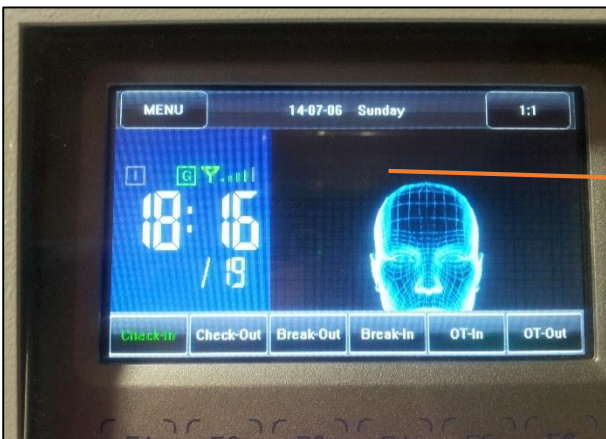
Biometric Device after booting

Touch Sensitive LCD display

Finger Print Reader

Dual Camera for Face Identification

IR LEDs for Face Identification in pitch dark during night time



LCD Display, when the device is ready for use.